An abstract graphic featuring several overlapping, thick, curved lines in shades of green and blue. The lines are arranged in a way that suggests a stylized 'G' or 'U' shape, with the green lines on the left and blue lines on the right. The background is white.

Recognition assembly  
16th December 2025



This child was selected because he worked extremely hard on his puppet design and prototype, and then even harder to make this fantastic final product.

# England, Wales, Scotland

The United Kingdom of Great Britain and Northern Ireland  
 The countries that are included in the UK are England, Scotland and Northern Ireland. Wales is not a country, it is part of England.  
 Fact about England: I live there. Fact about Scotland: it has the most castles in the UK, fact about Northern Ireland: it is connected to the main land.  
 The capital of England is London and the capital of Scotland is Edinburgh and the capital of Wales is Cardiff and the capital of Northern Ireland is Belfast.



town and country are cities  
 cities have lots of shops and buildings  
 there are very busy, they have  
 sometimes millions of people.



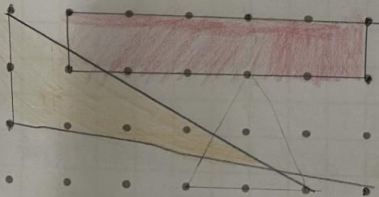
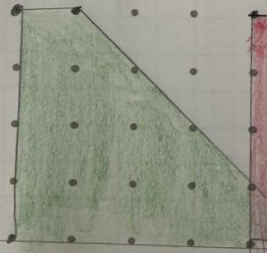
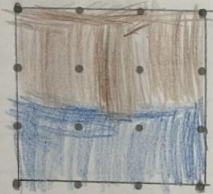
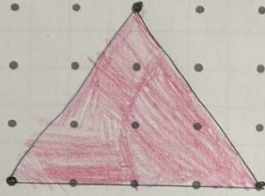
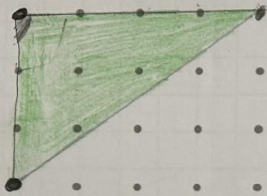
there's a picture of one town here.  
 villages are with only a few  
 hundred people, small with  
 one shop and 50 houses, and mostly  
 of trees and fields. here's a picture



down here.  
 towns are small but they  
 digger than villages they have  
 about a thousand people  
 in it

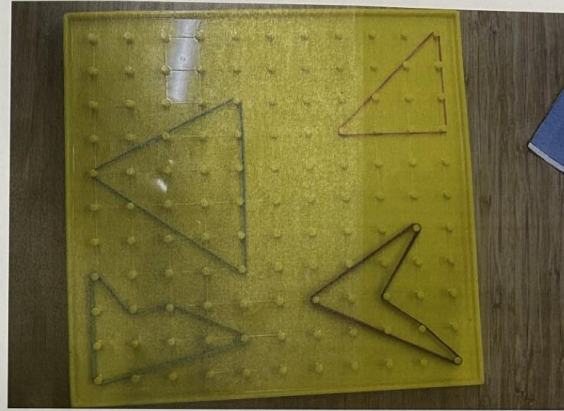
This child was chosen because their teacher was impressed by the presentation and level of detail they included in their double page spread showing what they had learnt about their geography topic.

Triangles and quadrilaterals 12.12.22



**Challenge**

Circle the shapes below that are a triangle.



Tick the statements that are true about quadrilaterals

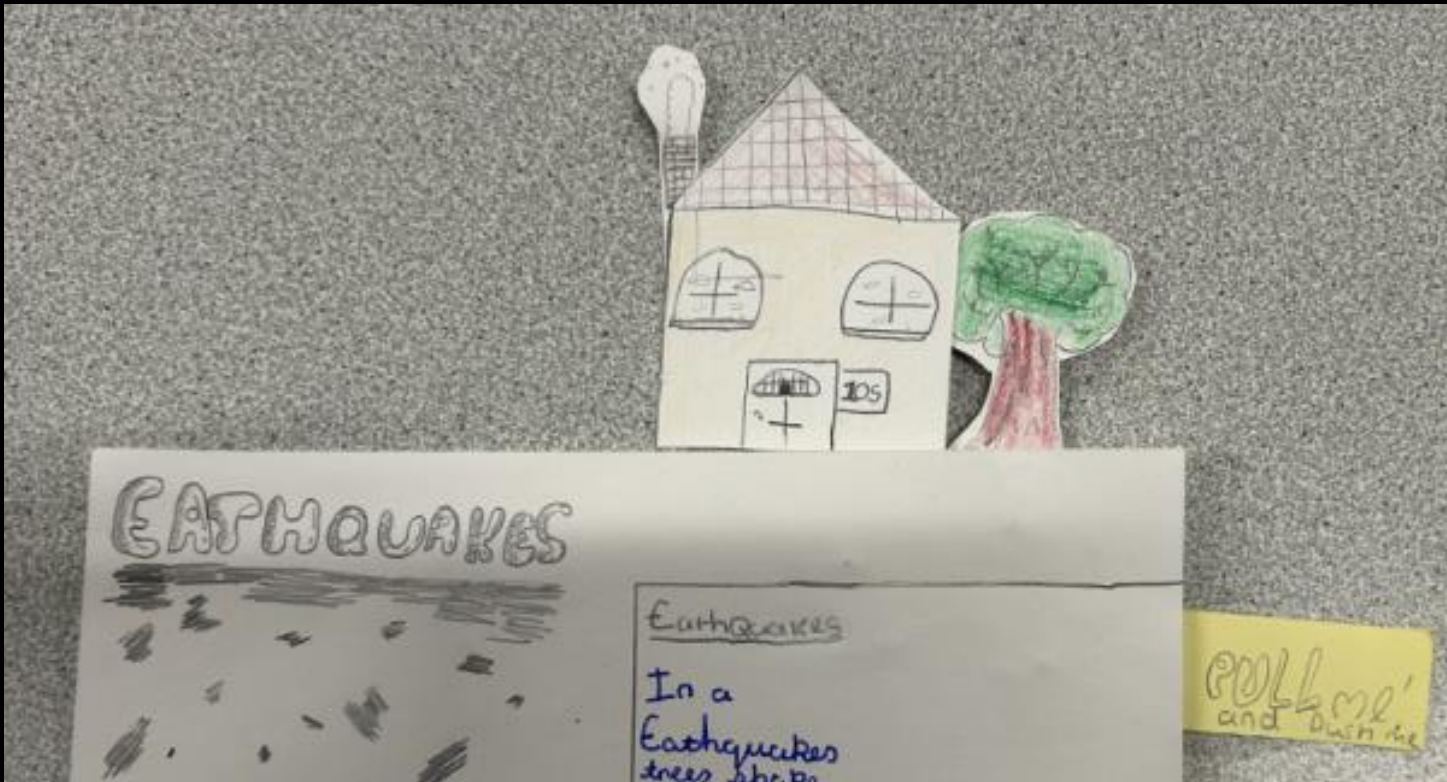
4 4 vertices

4 4 straight lines

4 4 lines that join together

4 4 curvy lines

This child's maths work really stood out to the teacher because it was produced independently and shows significant progress.



In schools when there's a Earthquake, they hide under the table

This child was chosen because they created a fantastic set of levers and linkages that enabled their model house to shake, demonstrating what happens during an earthquake.