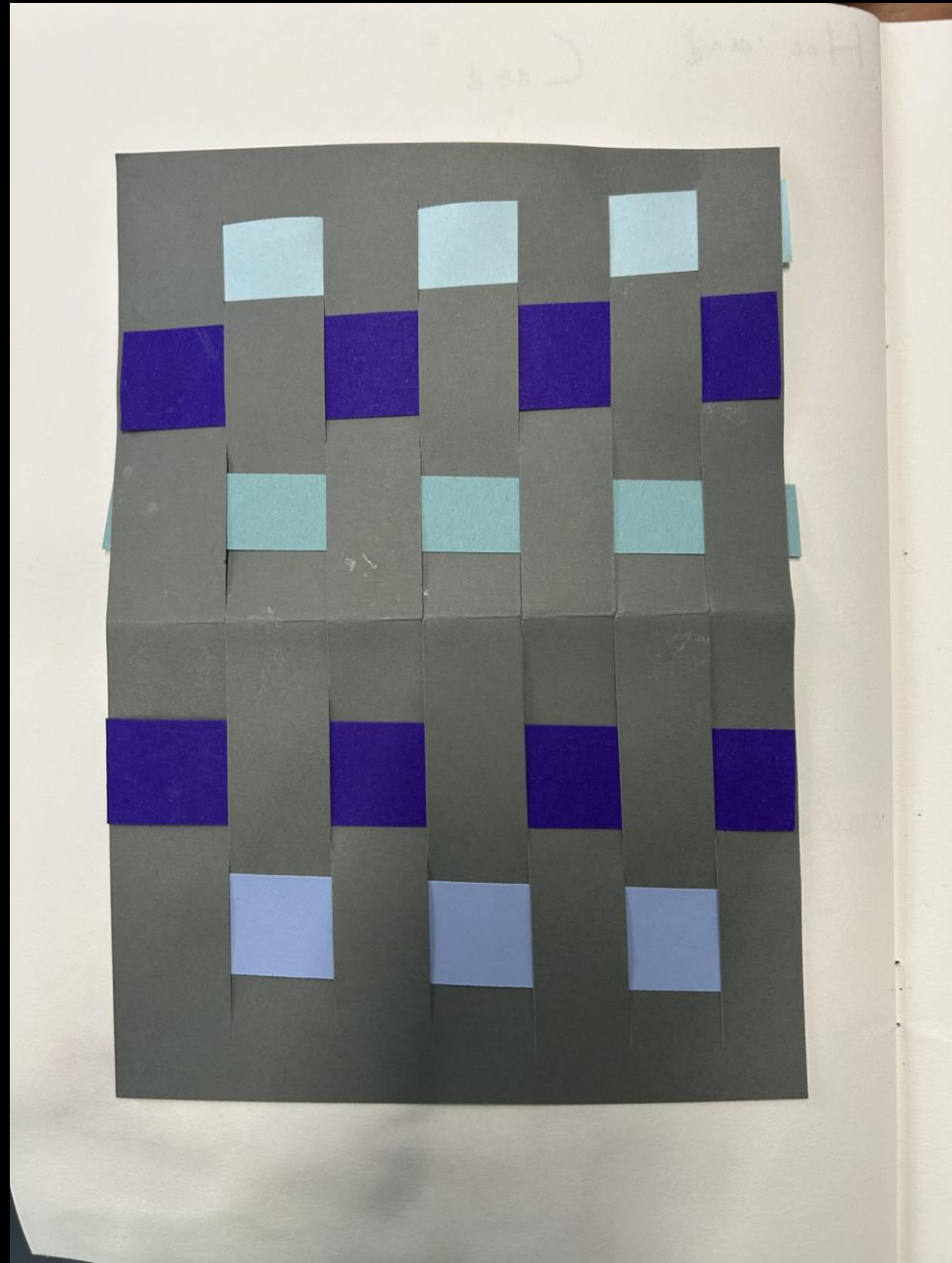


An abstract graphic featuring several thick, overlapping loops in shades of green and blue. The loops are arranged in a way that they appear to be intertwined, with some in the foreground and others behind. The colors range from a bright lime green to a deep, dark blue. The background is white.

Recognition assembly
31st January 2025



The ⁹ Lighthouse Keeper's lunch

beautiful beautiful

On a beautiful morning, a man called Jeffrey lived in a big mansion in ~~the~~ America. Jeffrey was a lighthouse ~~keeper~~ keeper and ~~every~~ every morning he would sail out to sea to the lighthouse ~~boat~~. When he arrived he would sweep the stairs, mop the floor and polished the light.

When Jeffrey was at the lighthouse his wife talor was comcooping a dishes for lunch for him.

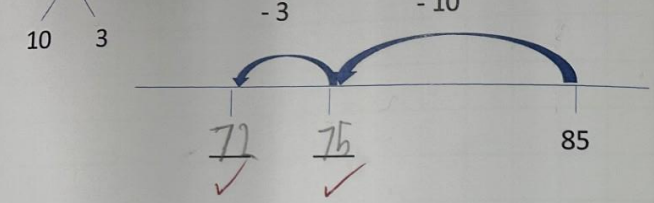
⊗ The next ¹⁰ morning, something terrible happened. ~~talor~~ talor made a dishes lunch with apple pie, cordat cake, cold chicken garnix and fish and chips in it but as it was in the boat a group of seagull ate it it "get of my good slop thing my lunch said ~~it~~ but they just ~~could~~ kept cling. ^{eating} _{eating}

On Sunday, they came up with a plan "I will put L Lolo in the ~~best~~ basket to chase the seagulls away splendid julyer talor a-thanyou she said Unsochunakly + Lolo did not agree with flying

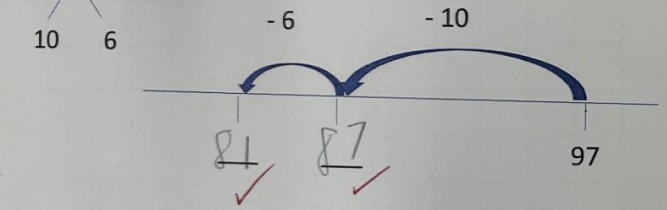
she ^{her} ~~his~~st wiscus slood on ehd as the basket sword she did not like it. "Lakerday Lakerday" said A Jeffrey "Mow Mow" Lolo agreed. "Yes ~~oh~~ got it" What is it my dear what is it? AA "Muslerd ~~satur~~ samurchis". The next ^{morning} ~~morning~~, she set it rededly and as the seagulls came she let go "Yuk! AUGH! AAA! disgusting I'm not comxing hir ever again" "Suc as life" Mr. Jeffrey said as he ate his lunch.

here here here here
what what what what

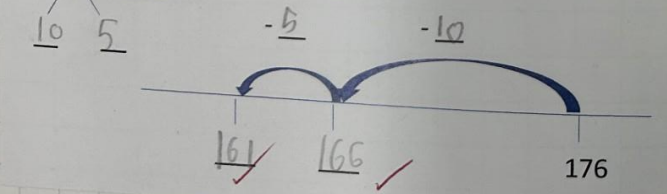
$$85 - 13 = \boxed{72}$$



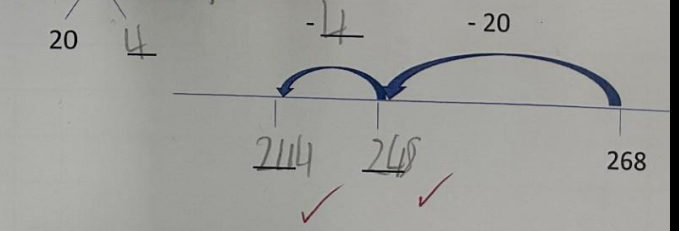
$$97 - 16 = \boxed{81}$$



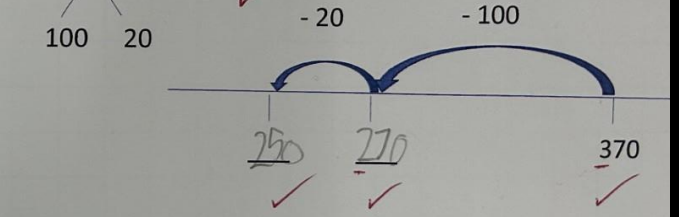
$$176 - 15 = \boxed{161}$$



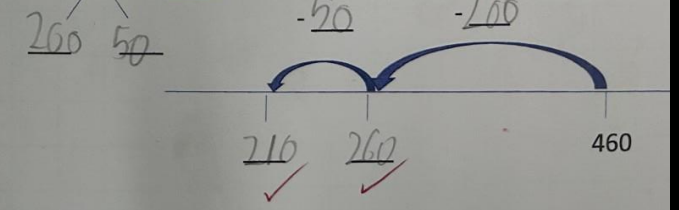
$$268 - 24 = \boxed{244}$$



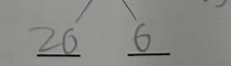
$$370 - 120 = \boxed{250}$$



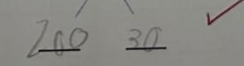
$$460 - 250 = \boxed{210}$$



$$169 - 26 = \boxed{143}$$



$$580 - 230 = \boxed{350}$$



Part 2

Finding the difference

29.1.25

$$820 - 790 = 30$$

A number line starting at 790 and ending at 820. There is a jump of +10 to 800, and then a jump of +20 to 820.

820
790 30

$$910 - 890 = 20$$

A number line starting at 890 and ending at 910. There are two jumps of +10.

910
890 20

$$630 + 400 = 1030$$

A number line starting at 400 and ending at 630. There is a jump of +10 to 410, and then a jump of +30 to 630.

630
400 230

$$423 - 394 = 29$$

A number line starting at 394 and ending at 423. There is a jump of +6 to 400, and then a jump of +23 to 423.

423
394 29

$$612 + 587 = 1199$$

A number line starting at 587 and ending at 612. There are jumps of +3 to 590, +10 to 600, and +12 to 612.

612

$$711 - 689 = 22$$

A number line starting at 689 and ending at 711. There is a jump of +20 to 709, and then a jump of +2 to 711.

711
689 22