



~~WELCOME~~ WELCOME.



NHS!

Edmund Haller primary
Welcome to Year 1!

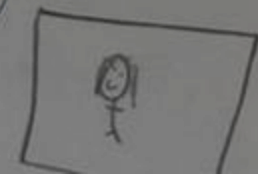
SCHOOL

LOVE

and

Creativity

Mistake





Mrs Shaw
Rainforest Class



Mrs Davis
Rainforest Class



Ms Clarke
Jungle Class



Mr Mc Gibbon
Jungle Class

Year 1 Staff Team

Core Values

Humanity

Creativity

Ambition

Curriculum Drivers

London and beyond

Social justice

Sustainable future



Year 1 Topics

Autumn: Dinosaurs/Celebrations
around the world

Spring: Kings, Queens and
Castles/The UK

Summer: Transport through
time/Australia

Dinosaurs

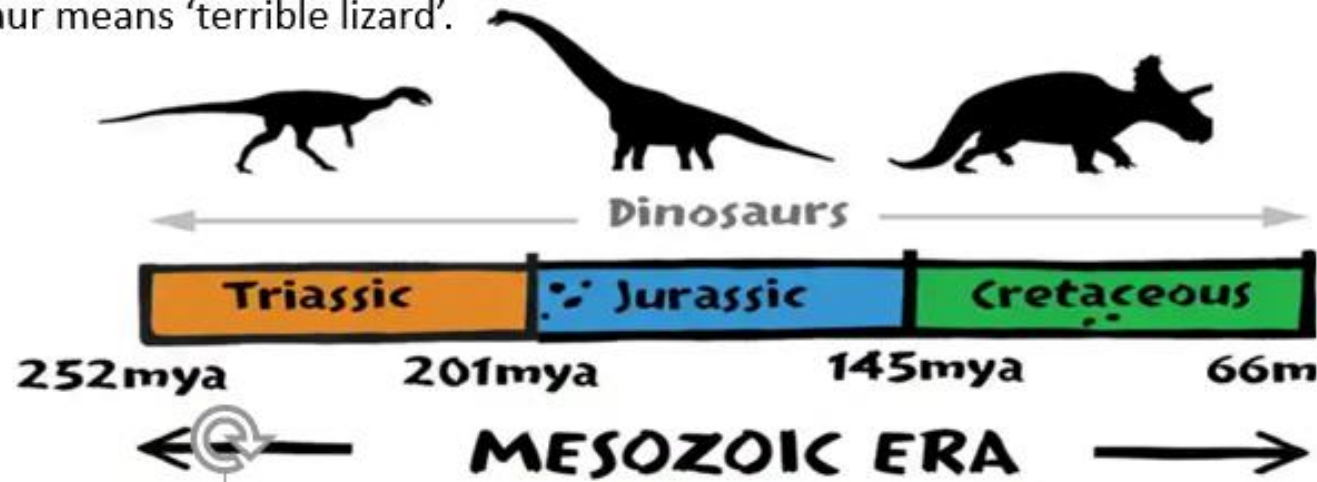
Enquiry Question

Why were Mary Anning's ideas not taken seriously?



What are dinosaurs?

- Dinosaurs are pre-historic reptiles that lived on land and had clawed hands and feet.
- Dinosaur means 'terrible lizard'.



Vocabulary

- Carnivore**- animal that only eats meat
- Cretaceous** period- The last period of the
- Mesozoic** era from 145- 66 million years ago
- Extinction**- When a species doesn't exist anymore
- Fossil**- Remains of a dead animal
- Herbivore**- animal that only eats plants
- Omnivore**- Animal that eats both animals and plants
- Paleontologist**- a scientist who studies fossils
- Pre-historic**- a time before history was recorded
- Timeline**- a way of measuring time and showing important events in order
- Victorian**- a person who lived during the Victorian period- 1837- 1901



Mary Anning was a British, Victorian paleontologist who was born in 1799. She made many important fossil discoveries.

She discovered the first full plesiosaur skeleton. It can be found in the Natural History Museum!



Rainforest Class

Monday Reading	9am English Continuous provision	Break 10- 10.20am	10.20am Maths Continuous provision	11.20am Phonics	11.50am Lunch	1pm Art Continuous provision Red Group reading	Break 2.20- 2.40pm	2.40pm Number sense	Story 3pm
Tuesday Reading	9am PSHE/RE with Miss Hashim Continuous provision		10.20am PE with Ms Henry Continuous provision	11.20am Phonics		1pm Maths Continuous provision Green group reading		2.40pm Number Sense	
Wednesday Reading	9am English Continuous provision		10.20am Phonics Continuous provision	Music 11/11.30am		1pm Maths Continuous provision Yellow group reading		2.40am Phonics	
Thursday Reading	9am English Continuous provision		10.20am Computing Continuous provision	11.30am Phonics		1pm History Continuous provision Blue group reading		2.40am Number Sense	
Friday Reading	9am English Continuous provision		10.20am Maths Continuous provision	11.20am Number Sense		1pm Science Interventions Continuous provision Purple group reading		2.40am Phonics	

Jungle Class

Monday Reading	9am English Continuous provision	Break 10- 10.20am	10.20am Maths Continuous provision	11.20am Phonics	11.50am Lunch	1pm Art Continuous provision Red Group reading	Break 2.20- 2.40pm	2.40pm Number sense	Story 3pm
Tuesday Reading	9am PE with Ms Henry Continuous provision		10.20am PSHE/RE with Miss Greenbank Continuous provision	11.20am Phonics		1pm Maths Continuous provision Green group reading		2.40pm Number Sense	
Wednesday Reading	9am English Continuous provision		10.20am Phonics Continuous provision	Music 11/11.30am		1pm Computing Continuous provision Yellow group reading		2.40am Phonics	
Thursday Reading	9am English Continuous provision		10.20am Maths Continuous provision	11.20am Phonics		1pm History Continuous provision Blue group reading		2.40am Number Sense	
Friday Reading	9am English Continuous provision		10.20am Maths Continuous provision	11.20am Number Sense		1pm Science Interventions Continuous provision Purple group reading		2.40am Phonics	

PE Day and PE Kit

PE is on a **Tuesday**. It is a mixture of indoor and outdoor PE.

Children should come to school in their PE kit. Suitable PE kit is:

Trainers

T-shirt

Leggings, jogging bottoms or shorts.

No sandals/wellies/skirts.

Please make sure that children have suitable shoes and clothes on, otherwise they may not be able to join in PE lessons for safety reasons.

Sometimes children will need to take their shoes off for PE. Please support your child in changing for indoor PE by getting them to get themselves dressed and undressed at home. They should practice putting on shoes and socks independently and need to be able to fasten them without an adult's help.

As a school
we have 3
rules...

Ready

Respectful

Safe



Sick
Sad
Tired



Happy
Calm
Feeling Okay



Frustrated
Worried
Silly/Wiggly



Mad/Angry
Mean
Yelling/Hitting

Zones of
Regulation

Reflection Records

Positive Postcards

- Supporting children to recognise their own emotional needs
- Giving children the skills to be able to regulate their emotions
- Creating a classroom where children feel that their feelings are valued
- Children take ownership of how they are feeling and their response
- Link between school and families- we may contact you to support you
- We move on and don't hold grudges!
- You may get sent a Positive Postcard when we see your child consistently doing something fantastic in school.

Date for your diary

Parents Evenings will be on

22nd October

23rd October

3.50pm-7pm

Educational Visits



Educational Visits and workshops will continue this year.

We ask for a £45 donation for the year to cover all experiences inside and outside of school.

You will be able to pay in £15 instalments or one lump sum.

We will inform you when we are going on visits and ask for support from parents where needed.

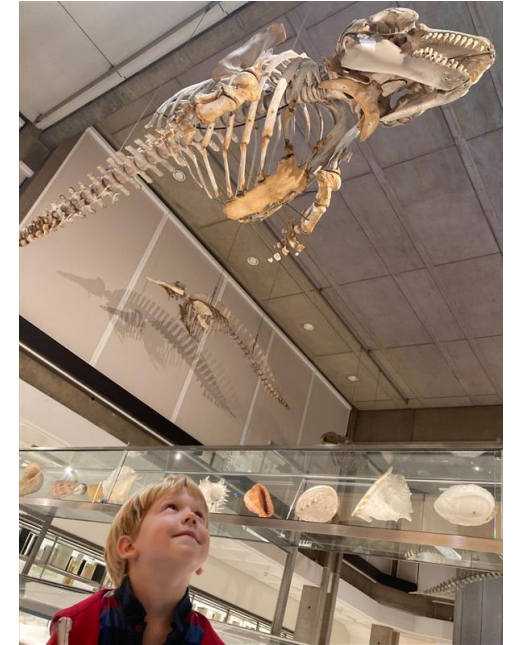
You will no longer need to sign a permission slip for every visit. You have signed a permission slip as part of starting school which gives permission for all visits.

Home Learning on Microsoft Teams

Home Learning will be posted weekly on the Year 1 Team on a Friday afternoon.

Each week there will be a different focus e.g. English, then Maths.

Children are expected to read for 10-15mins every day, as well as practicing their spellings. These are posted on Teams on a Friday.



There are also additional apps that children can use at home to support their learning; including Numbots and Bug Club reading. These logins will be sent home this week.

Please make sure that you read regularly with your child and write in their reading records at least once a week.

Book bags and reading books should be in school every day. Children have set book changing days, but we also read in class throughout the week.

How to communicate with school

What do I need to share?

Who should I speak to?

GENERAL QUERIES – Any general, non-urgent questions about school

earlyphase@edmundwaller.lewisham.sch.uk

PICK UP - Any changes about the end of the day – family members collecting, permission to walk home alone

pickup@edmundwaller.lewisham.sch.uk

ATTENDANCE– If your child is not attending school (as early as possible) or scheduled appointments (with a screenshot of text message received by parent/carer or email received by parent/carer included in the email chain)

attendance@edmundwaller.lewisham.sch.uk

EWRAP- Questions or queries

ewrap@edmundwaller.lewisham.sch.uk

CLUBS– For enrichment activity queries

clubs@edmundwaller.lewisham.sch.uk

SEND- If you require information relating to SEND, or have information to share with the school

SEND@edmundwaller.lewisham.sch.uk

Sharing quick information or quick question e.g. left coat at school, should we bring book bag?

Speak to the class teacher at the end of the day

Any questions?