



NHS!



Welcome to Year 1!

Edmund Haller primary
SCHOOL

LOVE

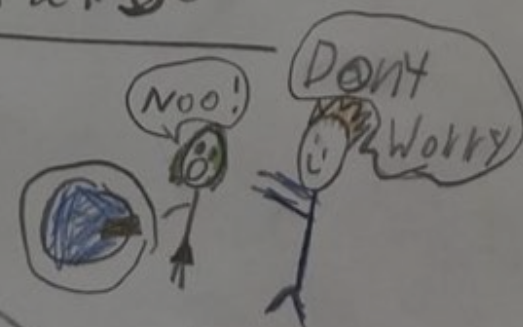
and



Creativity



mistake





Mrs Shaw
Rainforest Class



Mrs Davis
Rainforest Class



Ms Clarke
Jungle Class



Mr Mc Gibbon
Jungle Class

Year 1 Staff Team

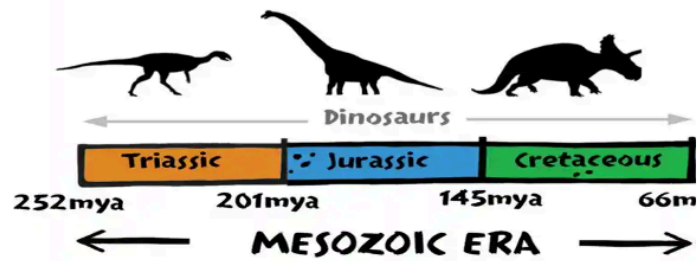
Year 1 Topics

Autumn: Dinosaurs/Celebrations
around the world

Spring: Kings, Queens and
Castles/The UK

Summer: Transport through
time/Australia

Dinosaurs



What are dinosaurs?

- Dinosaurs are pre-historic reptiles that lived on land and had clawed hands and feet.
- Dinosaur means 'terrible lizard'.

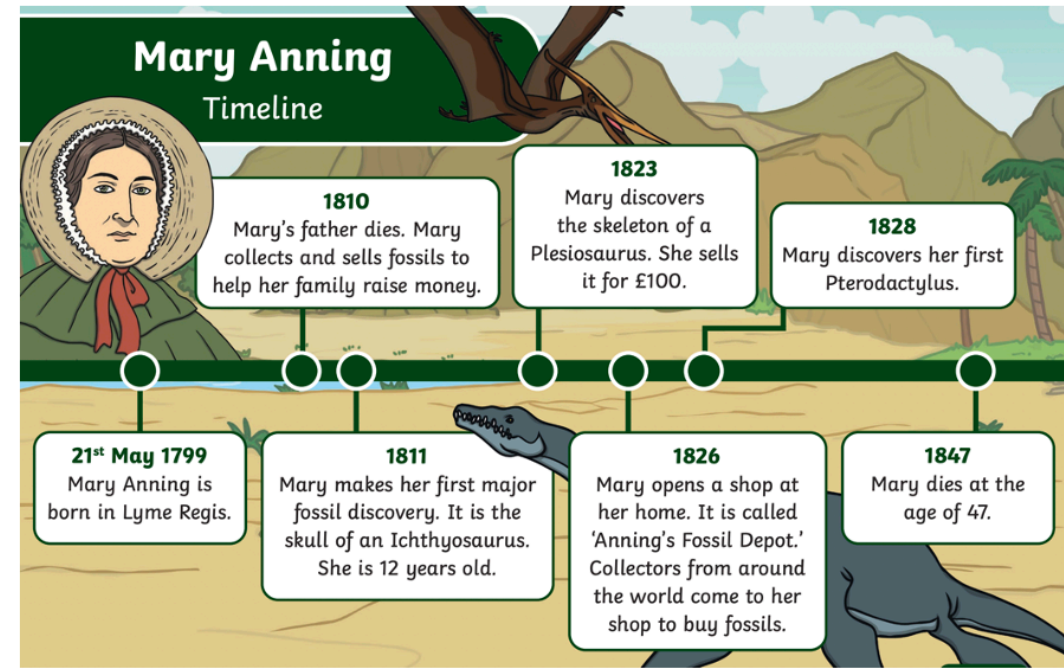
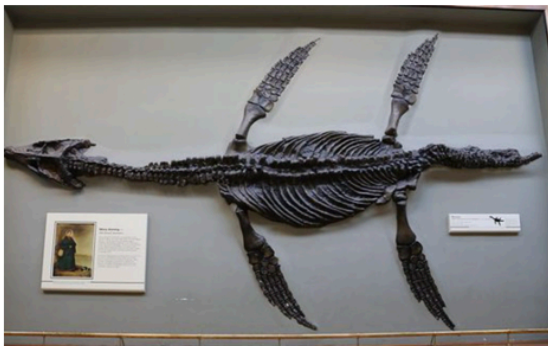


Mary Anning was a British, Victorian paleontologist who was born in 1799 in Dorset.

She made many important fossil discoveries. She found lots of fossils on the beaches of Dorset.

Mary Anning found the first full plesiosaur fossil. It is now displayed in the Natural History Museum.

Mary's ideas were taken by male scientists who did not take female scientists seriously.



Vocabulary

- ☐ **Carnivore**- animal that eats other animals (meat)
- ☐ **Extinction**- when a species doesn't exist anymore
- ☐ **Fossil**- remains of a dead animal
- ☐ **Herbivore**- animal that only eats plants
- ☐ **Omnivore**- animal that eats both other animals and plants
- ☐ **Paleontologist**- a scientist who studies fossils
- ☐ **Pre-historic**- a time before history was recorded
- ☐ **Timeline**- a way of measuring time and showing important events in order
- ☐ **Victorian**- a person who lived during the Victorian period- 1837- 1901



Rainforest Class

Reading EMW	9am English Continuous Provision	Break 10-10.20am	10.20am Maths Continuous Provision	11.20am Phonics	11.50am Lunch	1pm Art Continuous Provision Red Group reading	Break 2.20-2.40pm	2.40pm Number sense	Story 3pm
Reading EMW	9am English Continuous Provision		10.20am Maths Continuous Provision	11.20am Phonics		1pm Geography Continuous Provision Green group reading		2.40pm Number Sense	
Reading EMW	9am English Continuous Provision		10.20am Maths Continuous Provision	11.20am Number sense		1pm Computing Continuous Provision Yellow group reading		2.40am Phonics	
Reading EMW	9am RE Continuous Provision Ms Hashim		10.20am Science Continuous Provision Ms Hashim	11.30am Phonics		1pm English Continuous Provision Blue group reading		2.40am Number Sense	
Reading EMW	9am PE Continuous Provision Ms Henry		10.20am Maths Continuous Provision Ms Keith	11.30am Number Sense		1pm PSHE and interventions Continuous Provision Purple group reading		2.40am Phonics	

Jungle Class

Monday Reading	9am English Continuous provision	Break 10- 10.20am	10.20am Maths Continuous provision	11.20am Phonics	11.50am Lunch	1pm Geography Continuous provision Red Group reading	Break 2.20- 2.40pm	2.40pm Number sense	Story 3pm
Tuesday Reading	9am English Continuous provision		10.20am Maths Continuous provision	11.20am Phonics		1pm Art Continuous provision Green group reading		2.40pm Number Sense	
Wednesday Reading	9am English Continuous provision		10.20am Maths Continuous provision	11.20am Number sense		1pm Science Continuous provision with Ms Greenbank Yellow group reading		2.40am Phonics	
Thursday Reading	9am RE Continuous provision		10.20am English Continuous provision	11.30am Phonics		1pm Computing Continuous provision Blue group reading		2.40am Number Sense	
Friday Reading	9am PE with Ms Henry		10.20am Maths with Ms Keith Continuous provision	11.30am Number Sense		1pm PSHE Interventions Continuous provision Purple group reading		2.40am Phonics	

As a school
we have 3
rules...

Ready

Respectful

Safe



Sick
Sad
Tired



Happy
Calm
Feeling Okay



Frustrated
Worried
Silly/Wiggly



Mad/Angry
Mean
Yelling/Hitting

Zones of Regulation

Reflection Records

Positive Postcards

- Supporting children to recognise their own emotional needs
- Giving children the skills to be able to regulate their emotions
- Creating a classroom where children feel that their feelings are valued
- Children take ownership of how they are feeling and their response
- Link between school and families- we may contact you to support you
- We move on and don't hold grudges!
- You may get sent a Positive Postcard when we see your child consistently doing something fantastic in school.

How to communicate with school

What do I need to share?

- In emergencies, or for sharing important information including absences or different adults collecting
- If you have a non-emergency question or need information
- Sharing quick information or quick question e.g. left coat at school, should we bring book bag

Who should I speak to?

- Office@edmundwaller.lewisham.sch.uk
- Pickup@edmundwaller.lewisham.sch.uk
- Earlyphase@edmundwaller.lewisham.sch.uk
- Speak to class teacher at the end of the day

Educational Visits



Educational Visits and workshops will continue this year.

There is a £30 payment for the year to cover all experiences inside and outside of school.

You will be able to pay in £10 instalments or one lump sum.

We will inform you when we are going on visits and ask for support from parents where needed.

You will no longer need to sign a permission slip for every visit. You have signed a permission slip as part of starting school which gives permission for all visits.

PE Day and PE Kit

PE is on a **Friday**. It is a mixture of indoor and outdoor PE.

Children should come to school in their PE kit. Suitable PE kit is:

Trainers

T-shirt

Leggings, jogging bottoms or shorts.

No sandals/wellies/skirts

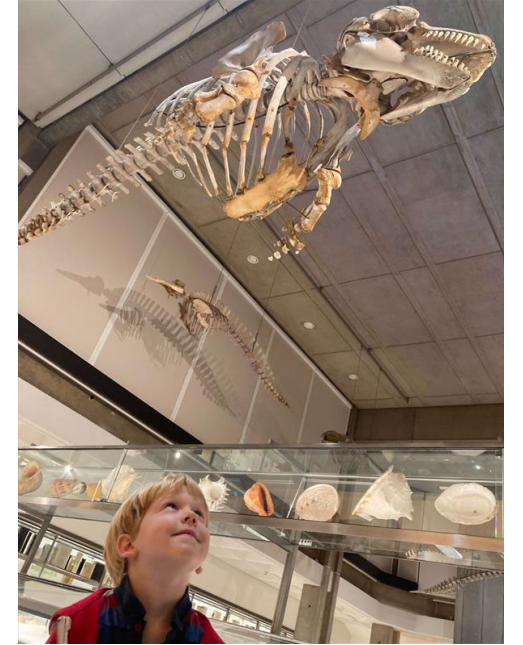
Remember to support your child in changing for indoor PE by getting them to get themselves dressed and undressed at home. They should practice putting on shoes and socks independently and need to be able to fasten them without an adult's help.

Home Learning on Microsoft Teams

Home Learning will be posted weekly on the Year 1 Team on a Friday afternoon.

Each week there will be a different focus e.g. on Friday we posted English home learning. For next week, the focus will be on our topic.

We will send home words that we are learning to read and spell, for you to focus on at home.



Every week children should also use Numbots for maths learning and Bug Club for additional reading. Children will bring home their logins this week.

Please make sure that you read regularly with your child and write in their reading records.

Their book bags and books should be in school every day.