

# Recognition assembly – Years 4, 5 & 6

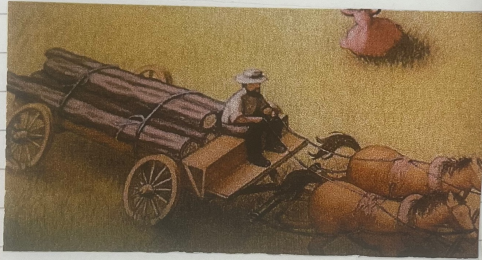
## 21<sup>st</sup> September '23

# Year 4

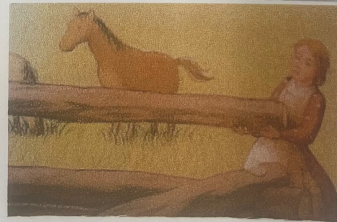
Prairie House. 12. 9. 23.



Dad stoppe the wagon because he wanto build the house.



Dad Have logs because he want to made a house.



Dad and mam they start built the house.



Dad and mam made the house and the girls they happy.

Regrouping

20.9.23

$$\begin{array}{r} 1. \quad \text{H T O} \\ 188 \\ + 30 \\ \hline 224 \checkmark \\ 11 \end{array}$$

$$\begin{array}{r} 2. \quad \text{H T O} \\ 186 \\ + 232 \\ \hline 416 \checkmark \\ 1 \end{array}$$

$$\begin{array}{r} 3. \quad \text{H T O} \\ 367 \\ + 258 \\ \hline 625 \checkmark \\ 11 \end{array}$$

$$\begin{array}{r} 4. \quad \text{T O} \quad \text{H T O} \\ 45 \quad 45 \\ + 60 \quad + 60 \\ \hline 90 \quad 90 \\ \hline 8 \quad 198 \checkmark \\ 1 \end{array}$$

$$\begin{array}{r} 5. \quad \text{H T O} \\ 18 \\ + 37 \\ \hline 68 \\ 119 \\ 11 \end{array}$$

$$\begin{array}{r} 6. \quad \text{H T O} \\ 14 \\ + 27 \\ \hline 22 \\ 53 \\ 1 \end{array}$$

# Year 5

Except we did. Suddenly, without warning, we found ourselves stuck in a traffic jam. Tyres ~~came squeaking too~~ squeaking to a stop all around us. Horns beeped, trucks rumbled by and bells started ringing. I looked out the window and saw helicopters flying in spirals above. Sirens wailed so I shut the window. So close only to be stuck in traffic. Harry and I were so bored. We started to fight. Harry wanted to play I-spy. I wanted to play 21. Mum suggested we play 21 questions. "No!" we both shouted. We didn't want to play that! In the end, I fell asleep.

## PP1: The Journey

20.9.23

### • Hearing

sirens  
wailing  
tyres squeaking  
horns honking  
horns beeping  
trucks rumbling  
bells ringing  
helicopters spiralling above

### • Action

Play 'I-spy'  
Play 21  
Play 20 questions  
Fight  
sleep



# Year 5

Aiding and Subduing Emily 20.9.23

1. Here are some calculations involving decimals. Which have the correct answer? Where the answer is incorrect, can you explain what mistakes have been made?

1.  $2.23 + 2.3 = 25.3$  ✓

2.  $3.38 + 3.8 = 38.38$  *this one is wrong because*

3.  $5.6 + 5.6 = 10.12$  ✓

2) Which calculation is correct? Explain why.

$$\begin{array}{r} 345.6 \\ + 49.24 \\ \hline \end{array}$$

$$\begin{array}{r} 345.6 \\ + 49.24 \\ \hline \end{array}$$

Show your workings using column method:

$278 + 87.5 =$  ~~##~~

$703 - 27.7 =$

$64 + 287.2 =$

Last week, Emily ran 15.6km in her training session. This week, she ran 6.2km less than she did last week. How far did she run this week?

2) This one is correct because you would put 345.6 then under is 0.24 you don't put the 400 under the 300 and you put the nine under the four. So it is the tenths and the hundredths. You put the 400 under the hundred. So it is a part of the tenths.

$278 + 87.5 = 365.5$

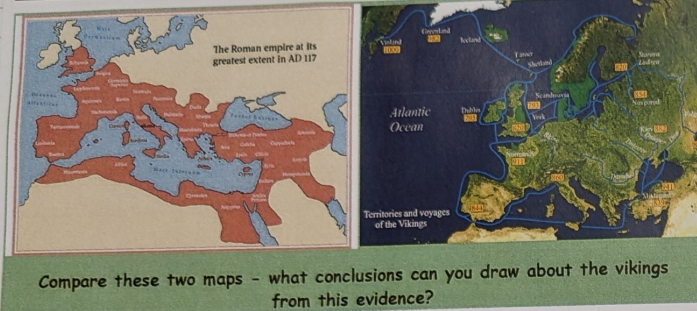
$703 - 27.7 = 675.3$

$64 + 287.2 = 351.2$

# Year 6

## Viking voyagers

20.09.23



These maps show us that the Vikings were...	On the other hand, the Romans...
In addition, the Vikings were...	You can also conclude that...

We can conclude that Vikings didn't want a lot of land unlike Romans who had a large empire. In addition, the Vikings were very good travellers and Vikings were very good sailors. They were constantly moving, at one point they travelled around four continents: Africa, Asia, Europe and North America.

## Viking voyagers

20.09.23

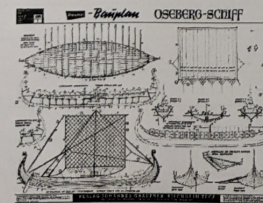
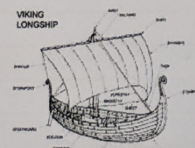
1. Why was the Viking longboat design so effective?

shallow hull	rows of oars on either side	large sail and keel stone
--------------	-----------------------------	---------------------------

2. What did the Viking longboat enable the Vikings to achieve? (Think about exploring, trade and warfare)

The Viking longboat was effective because...	This allowed the Vikings to...	In addition, they were able to...
--	--------------------------------	-----------------------------------

3. Draw and label your own Viking longboat - describing the design elements that made it so successful at trading and raiding.

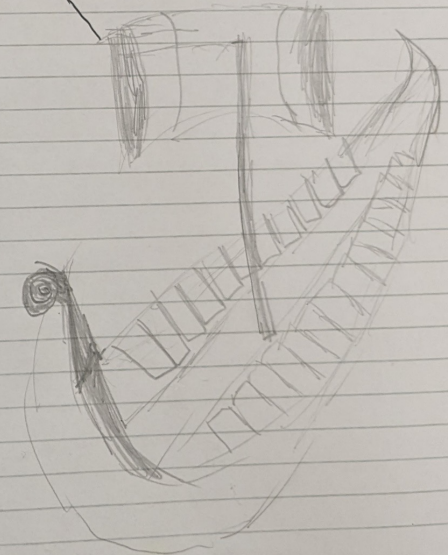


1. The long ~~bo~~ longboat is very effective because of lots of reasons: ~~because:~~

- Its shape made it skim across water ~~and~~ <sup>with</sup> which is much faster than a ship that ~~has~~ <sup>that</sup> ~~doesn't~~ cut across water.
- It uses less timber so the Vikings could use it on other uses.

2. Vikings could trade, explore and fight better with the longboat ~~go~~ <sup>to get into details:</sup>  
 • Vikings traded so that they ~~could~~ <sup>could</sup> get valuables from foreign ~~or~~ <sup>countries</sup> that would be hard to get, for example, Vikings would give them ~~amber~~ <sup>amber</sup> beads and they would give Viking traders silver.

• Vikings could sail right up to beaches ~~and in~~ <sup>because</sup> a longboat is really fast. <sup>(mast)</sup>





# TUNDRA

A drawing of a rabbit, possibly a mountain hare, with long ears and a greyish-brown body. The rabbit is facing left. Above the rabbit, the handwritten text "Alpire is" is visible.

# Climat

Arctic hare

Climate  
The temperature in the Tundra can go down to  $-30^{\circ}\text{C}$ . In the winter there is always a deadly cold breeze going around it ~~lasts~~ lasts up to 10 months. There is ~~always~~ <sup>almost</sup> endless nights of dark. Around the summer the temperature gets to  $16^{\circ}\text{C}$ . The dazzling sun appears and flowers start to bloom and that only lasts for 2 months.

### How Humans have adapted to survive in the Tundra

Humans have lived in the tundra for over 20,000 years, by using the right equipment such as: sealing fish, seal, reindeer, plants, leather or fur as clothing. Sleeks, dogs reindeer, skidoos and snow shoes for transportation. Tents and sleeping bags are ~~very~~ very important too. If they didn't bring the right equipment it would be hard to live in.

## Plants

In the Tundra the permafrost stops plants from growing long roots so plants have adapted in their own ways such as: cotton grass, uses the wind to blow seeds around. Lichen doesn't need roots to grow. The Arctic poppy is also very common in the summer and grows around geodes.

### FUN FACT

Polar Bears have big paws and claws to get through the thick snow.

# BIOME

How animals have adapted to survive in the tundra

The Tundra is a cold but deadly. Its harsh features make it hard to live in but animals have ~~made~~ <sup>evolved</sup> themselves amazingly adapted to survive in the Tundra for this day. The Arctic fox has a white camouflage coat of fur in addition in the summer it sheds a or rather a grey or brown coat. The polar bear has sharp teeth and claws to hunt its prey and a big nose to smell its prey from long distances.



FUN FACT

Did you know the  
tundra ~~are~~ is in Asia,  
South America and North  
America?

Musk oxen

